



bright
GROUP

Capability Statement

►► About Us

Bright Group has solidified its presence as a leader in Access and Mechanical services, with a focus on shutdowns, projects, and general maintenance. Our expertise has significantly broadened through the development of high-quality work practices and a steadfast commitment to ethical standards.

Our commitment to excellence is recognised with clients and regions across Australia. Bright Group has evolved its operations to be identified as a comprehensive end-to-end service provider, offering tailored solutions to a wide range of clients in the resource sector.



► Our Journey

Bright's journey began two and a half decades ago when a young Stephen Easterbrook travelled to Tom Price for a shutdown assignment as a Rigger.

**Bright's Beginnings
24 Years Ago**

Stephen spent the next 7 years gaining valuable business experience and establishing long-lasting industry friendships culminating in 2007, when Pilbara Access was established.

**Evolution of
Experience**

Pilbara Access received the Business News 40 under 40 award for providing top-tier scaffolding and access solutions across the WA Pilbara. We were also recognised by Rio Tinto in their Supplier Recognition program as industry leaders.

**Award-Winning
Excellence**

Pilbara Access re-branded to Bright Group, expanding our mechanical services to the Mining and Resources sectors across WA and nationwide. Establishment of Bundara West and Bright Education.

**Pilbara Access to
Bright Transformation**

Bright Group invested in a continuous improvement program in partnership with the CEO of Newmont Gold. The success of this program resulted in being bestowed with the Newmont CEO Safety Award, adjudicated across their global operations.

**Bright's Dedication to
Excellence and Safety**

Bright Group welcomes accomplished industry leaders to the executive team, marking an exciting growth phase. Our services are expanded by offering end-to-end cost reduction and efficiency solutions for clients and extending our reach across wider sectors.

**A Year of
Transformation**

1999

2007

2009

2020

2022

2023

**Scaffolding
Journey Starts**

**Rope Access
Services
commences**

**Training
Centre Opens
its Doors**

**Bright
secure Facilities
Management
Contract with
Chevron**

**Mechanical
Services
Commences**

**Entered the
Lithium Market-
Full life cycle
Maintenance &
Shutdowns**

**Secured first
Electrical
Project**

▶▶ Leadership Team

The Leadership Team of Breight Group comprises a proficient core group of directors, each highly accomplished in their respective fields.

Their expertise spans all aspects of the business. Supported by a team of specialists in Access, Mechanical, and

Education. Breight Group boasts an impressive track record of successful project delivery. Our dedicated team is committed to achieving high-quality, efficient, and dependable project outcomes.



Our philosophy is centered on providing our clients with access to the highest calibre individuals and ensuring direct engagement from Breight's Leadership Team throughout the project delivery process.

► Safety and Values

HSEQ Management Systems

Bright Group maintains certifications to HSEQ management systems by documenting processes, procedures, and responsibilities for achieving quality policies and objectives to improve operational effectiveness and efficiency on a continuous basis.

Bright Group holds the following HSEQ accreditations:

- ISO 9001:2015 Quality Management System
- ISO 14001:2015 Environmental Management System
- ISO 45001:2018 Occupational Health and Safety Management System



►► What We Do



Projects

Bright Group's Project department focuses on end-to-end service delivery through implementation of effective operational planning, task optimisation, project management and staged work reporting. Bright Group provides a full range of mechanical services from materials procurement, fabrication and installation services to ensure our clients projects are managed from start to completion at the highest standard.

CLIENTS

FMG
RIO TINTO
BHP
CHEVRON
NEWMONT
ROY HILL
LAING O'ROURKE
CPB
WOODSIDE

SECTORS

Iron Ore
Gold
Oil & Gas
Renewables
Lithium
Nickel



Scaffolding

Bright Group's Scaffold Access department specialises in the supply and management of scaffolding services.

We understand the importance of scaffolding on any project and look for solutions to every access challenge.

Using innovative methods that focus on standardisation and execution efficiencies we aim to ensure all our scaffold projects are completed with the highest standards in mind for our employees and clients.

Supported by our accredited RTO Bright Education we are able to facilitate industry 'best practice' education to deliver scaffolding services with confidence.



Rope Access

We prioritise safety with our work positioning techniques that effectively mitigate risks in heights and confined spaces. Our rope access services not only ensure safer operations but also lead to reduced mobilisation and demobilisation costs, improved project scheduling, and faster returns to work.

Rope access services provide a much safer alternative to working in confined spaces or at heights, significantly minimising associated risks. Working in association with our scaffolding division, our rope access division can offer alternative access solutions for various projects.



Mechanical

Bright Group's Mechanical capabilities for the more routine tasks is underpinned by the training provided in our RTO facility. We strongly believe that technicians appropriately trained in Mechanical maintenance can undertake the routine tasks in a safer more productive manner including changing out screen media, Roller change out, application of Wear Max, Change of Skeller-ups, Liner replacement together with providing effective assistance to Mechanical trades people.





Education

Our courses cater to employers and individuals alike. Nationally Accredited training is an investment in your skills and safety, meeting mandated licensing requirements for various work types.

As an ASQA Registered RTO (#45006), Bright Education offers a blended approach, combining online and facility training to suit your needs. Benefit from focused instruction, demonstrations, and ample practice time before assessments. With smaller class sizes and extended durations, our courses ensure a personalised, high-quality learning experience.



Project Management

Outalay is an intuitive and centralised data ecosystem designed to revolutionize the way mine site operations are managed.

Our program provides critical data analysis that enables informed decision-making for both leadership and operations teams.

With Outalay, you can effortlessly analyse upcoming operation details and supporting documents, ensuring accurate monitoring of project progress and overall health.



Employment

Bundara West partnered with Bright Group to revolutionise Indigenous careers in the mining industry. With targeted initiatives, we address current challenges and provide a fresh experience for Indigenous individuals interested in mining careers.

By leveraging the knowledge of Indigenous leaders as mentors and role models, along with mining services training at Bright Education, we foster skill development and expertise among our employees. Our ultimate goal is to empower Indigenous people, enabling them to make significant contributions in the mining sector and make Bundara West their employer of choice.

Inspiring Success



Troy's passion lies in enabling Indigenous individuals to flourish in their chosen careers. With this vision in mind, he founded Bundara West. A platform dedicated to paving the way for Aboriginal and Torres Strait Islander people to excel in specific mine site servicing skills.



► Our Commitment

Empowering Indigenous Communities in Mining

At Bundara West, our unwavering commitment is to empower Indigenous communities, enabling them to actively contribute to and advance the mining operations across Australia.

We take immense pride in our selected achievements over the past four years, demonstrating our dedication to this mission.

Employment Opportunities

We've successfully created numerous employment opportunities within the mining sector, providing valuable jobs to Indigenous individuals and contributing to their economic prosperity.

Training Initiatives

Through tailored training programs within Breight Education, we've equipped Indigenous talent with the skills and knowledge needed to excel in the mining industry, fostering personal and professional growth.

Sustainable Partnerships

We've forged lasting partnerships with Indigenous organisations, ensuring that our commitment to empowerment is woven into the fabric of our operations.

191

Indigenous candidates who have taken access courses at Breight Education

\$771k

Investment in training Indigenous candidates

\$5.9m

Salaries for Indigenous employees

►► The Breight Difference

Value

Demonstrating value to our clients through on-time service delivery, quality, efficiency, and safety.

Partnerships

Forging strong partnerships founded on trust, reliability, and consistently meeting expectations.

Expectations have changed

Expectations have evolved as clients seek lasting value, improved safety systems, and a shift towards more sustainable practices. This insight guides Breight to lead change through innovation, operating with integrity and building trusting relationships with our employees and clients.

By adapting to shifting expectations, we enhance customer satisfaction and remain a trusted partner in a changing landscape.

Transparency

Guided by company values of respect, integrity, and teamwork through accountability.

Continuous improvement

Achieved through ongoing innovation, collaboration, a culture of learning and feedback, and a commitment to excellence.

Productivity

Delivering efficiency through innovation, we optimise resources, streamline processes, and consistently deliver quality outcomes for clients.

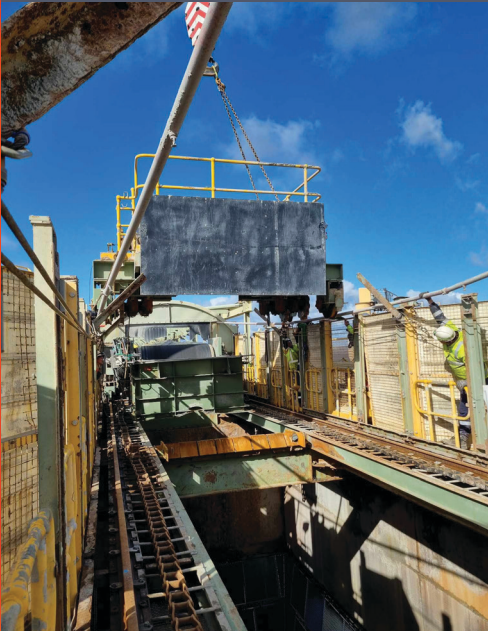
Our disruptive approach / redefining industry norms

We foster innovation, embrace cutting-edge technology, and prioritise efficiency, safety and first-class employee training. By redefining industry standards, we bring a disruptive, positive change to the way things are traditionally done.



► Breight Group

Projects



Project: Newmont Gold Replace Shuttle

Type: SMP

Scaffolding

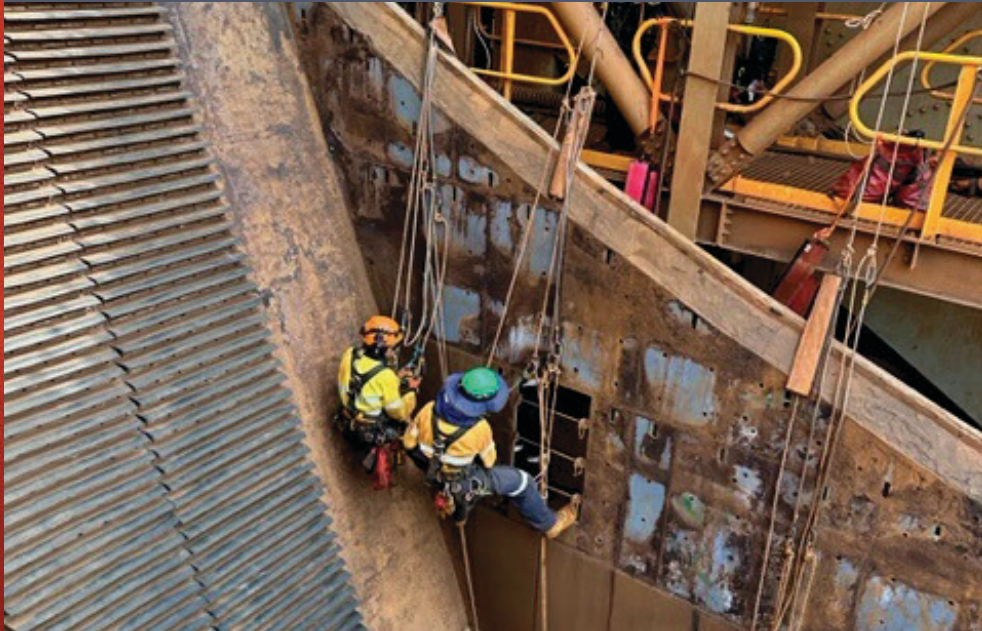


Project: Wheatstone Gas Plant

Type: Modular and Tube Fitting Access

► Breight Group

Rope Access



Project: Rio Tinto Cape Lambert

Type: Screen House Upgrade

Mechanical



Project: Newmont Gold Bag House Replacement

Type: SMP



bright
GROUP

BundaraWest
IN PARTNERSHIP WITH BRIGHT GROUP

HEAD OFFICE

08 6216 5000
1 Eyre Street, Rivervale, 6103.
enquiries@bright.com
brightgroup.com

NEWMAN HUB

08 6216 5000
68 Woodstock Street,
Newman, 6753.
enquiries@bright.com

ONSLOW HUB

08 6216 5000
453 Beadon Creek Road,
Onslow, 6710.
enquiries@bright.com

ORANGE HUB

08 62165000
23-25 Kenna Street,
Orange, 2800, NSW.
enquiries@bright.com

